

# SEA-IX™

SBA-MP-OH

SBA Exchange Resin

Distributed Particle Sized, Macroporous-Type

Technical Data Sheet

SBA-MP-OH is a SBA porous-type resin based on Styrene Monomer and Divinyl Benzene, using a TMA as its functional group.

SBA-MP-OH has outstanding physical and chemical strength. It also features a high degree of whole beads, providing outstanding performance.

SBA-MP-OH is applied in nuclear power plant systems and maintains outlet water quality with TOC levels below 10 ppb under standard operating conditions.

## Physical and Chemical Properties

Form	Spherical beads	Matrix	PS-DVB, Porous
Functional Group	Type 1 (Trimethylammonium)	Ionic Form	OH <sup>-</sup>
Total Capacity (eq/l)	0.8↑	Moisture Retention(%)	50~70
ΔTOC	10↓	Whole Beads( %)	95↑
Uniformity Coefficient	1.7↓	Particle Size (mm)	0.55~0.70
Swelling Rate (%) : S.B	OH 95.0↑, Cl 0.1↓, CO <sub>3</sub> 5.0↓, SO <sub>4</sub> 0.1↓	Metallic impurities : S.B (ppm/dry resin)	Al 10↓, Ca 50↓, Cu 5↓, Fe 20↓, Mg 50↓, Pb 5↓, Na 20↓, K 40↓, Co 5↓, Hg 15↓

## Test Conditions and Results

- Resistivity > 15.0MΩ.cm (in 30min)
- ΔTOC < 10ppb (in 90min)
- Standard Operating Conditions (Feed Water): Resistivity > 17.5 MΩ.cm , TOC < 3ppb, SV = 30

Technical Questions & Product Orders:

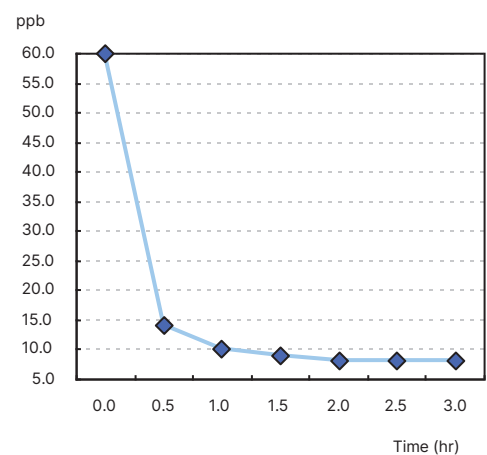
### Isaac Post

Business Development Manager

ipost@birchtech.com

tel: 304 841 5681

<ΔTOC>



### Packaging:

- 1000 lbs. (453 kg) super sacks
- 50lb Bags (22.6 kg) - 24 per pallet

### Shipped from:

- Huntersville, NC

